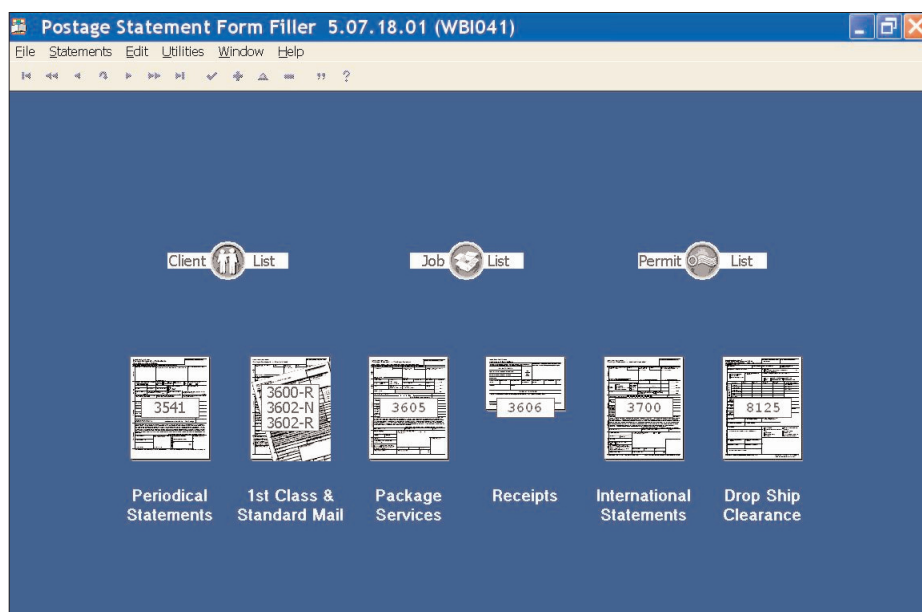


## Easy and cost-effective solution for generating Postage Statements

Window Book's **Postage Statement Form Filler** allows users to easily create computer generated Postage Statements, when submitting them handwritten is the only other option.



*Creating Postage Statements is quick and easy!*

### Save time by quickly producing computer generated Postage Statements

Postage Statement Form Filler will generate the following statements and forms for processing your mailings: 3541, 3600-R, 3602-R, 3602-N, 3605-R, 3606, 3700, and 8125 drop ship forms.

### Edit your statements

Full statement edit capabilities allow you to match the documentation exactly to the mailing itself, even at the last minute.

### Use *PostalOne!*® Web Services & FAST for Intelligent Mail®

Participate in *PostalOne!*® Web Services for making electronic postage payments and FAST for scheduling drop ship appointments.

### Maintain a Database

Maintain a database by job, permit and client. Maintaining an integrated database of all postal statements is essential for your business management.

### Avoid costly mistakes and forget the hassle today

Filling in these forms by hand can be tedious, time consuming, and lends itself to human error. Postage Statement Form Filler provides a better and more efficient alternative for mailers.

### Major ROI savings on time and productivity!

Call us at **800-524-0380**, email [postalspecialist@windowbook.com](mailto:postalspecialist@windowbook.com) to order Postage Statement Form Filler today.

*[continued on reserve]*

# Outgrow PSFF?

## Upgrade options are quick and easy to implement:

### Post Master™

Use **Post Master** to data-entry prepare postage statements, and utilize Management Reports to make your whole mail production system more efficient!

#### Save time and money while improving accuracy with standardized statements

- Easy data entry and editing capability
- Flexibility when creating postage statements and drop ship forms
- Supports multiple piece weight jobs with required USPS Breakout Report
- Manage Partial Mailings
- Postage Accounting, *PostalOne!*®, and Confirm Support available

#### What does Post Master™ do?

- Creates and maintains a database of USPS Postage Statements
- Uses *PostalOne!*® Web Services for making electronic postage payments for Intelligent Mail®
- Schedules drop ship appointments via FAST as required for Intelligent Mail®
- Stores clients, jobs, permits, and other custom information
- Provides over 80 mail management reports; tracks permit activity and balances
- Fully upgradable and customizable as your mailing needs change and grow
- Optional Modules: Postage Accounting Module and Confirm Module

### DAT-MAIL™

**DAT-MAIL** provides Mailers, Lettershops, Mail Owners, and Mail Transportation Companies everything needed to manage their mailing operations quickly and efficiently.

#### Go far beyond just Postage Statement generation with DAT-MAIL

- Utilize Industry-Standard Mail.dat® data
- Reduce costs while improving accuracy
- Edit postage statements to match your mailings
- Enjoy powerful reporting and postage management tools

#### DAT-MAIL features:

- Support for Basic and Full Service Intelligent Mail®
- Mail.dat validation, viewing, and editing capabilities
- Electronic Mail Verification (USPS *PostalOne!* and FAST for Intelligent Mail)
- Sophisticated Freight Planning
- Comprehensive Postage and Mail Management Reports
- Complete Postage Statement creation and editing options – eDocs and a complete back up system
- Optional modules: Palletization, Manifest Spoilage, USPS Confirm® Service, Specialized Freight Planning and Cost Analysis packages, Business Management System interfaces

**Call us at 800-524-0380, email [postalspecialist@windowbook.com](mailto:postalspecialist@windowbook.com) to order your mailing solution.**